

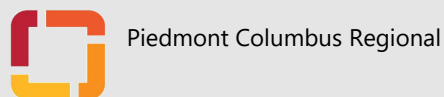


For more information regarding our preceptors please contact

Rebecca Cummings, PharmD

Clinical Coordinator
 PGY1 Residency Program Director
 Department of Pharmacy
 Piedmont Columbus Regional Midtown
 710 Center Street
 Columbus, Georgia 31901
 Phone: 706-571-1495
 Fax: 706-571-1861
 Rebecca.Cummings@piedmont.org

<https://www.piedmont.org/locations/piedmont-columbus/home>



MEET OUR PHARMACY RESIDENCY PRECEPTORS



Pharmacy Administration



Debbie Nowlin, RPh
 Director of Pharmacy

Mrs. Nowlin has extensive pharmacy management experience and currently serves as the Director of Pharmacy for Piedmont Columbus Regional. She received her Bachelor of Science degree in Pharmacy from Auburn University. She oversees numerous inpatient and outpatient pharmacy practice areas. She serves as the leader of a talented team of pharmacists.



Kelly Altman, PharmD

PharmD: Auburn University
 Pharmacy Manager—Piedmont Columbus Regional Midtown



Ryan Crossman, PharmD, BCPS

BS in Nutritional Sciences:
 University of Florida
 PharmD: Auburn University
 PGY1: CRH—The Medical Center
 Clinical Manager



Sherry Martin, PharmD

PharmD: Auburn University
 Pharmacy Manager—Piedmont Columbus Regional Northside,
 Outpatient Pharmacy Operations

Program Directors



**Rebecca Cummings,
PharmD**

PharmD: Samford University
PGY1: CRH—The Medical Center
Clinical Coordinator
PGY1 Residency Program Director

**Jamie Crossman,
PharmD, BCPS, BCACP**



PharmD: Massachusetts College of
Pharmacy and Health Sciences
PGY1 Ambulatory Care: CRH—The
Medical Center
PGY2 Ambulatory Care Residency
Director
Clinical Pharmacist: Ambulatory Care

**Josh Chestnutt,
PharmD, BCPS,
BCCCP**



PharmD: Auburn University
PGY1: CRH—The Medical Center
PGY2 Critical Care Residency Director
Clinical Pharmacist: Critical Care/
Neurosciences

Preceptors

**Alexis Hatala,
PharmD**



PharmD: Palm Beach Atlantic
University
PGY1: McLeod Regional Medical
Center
Clinical Pharmacist: Internal Medicine

**Sheree Tolbert,
PharmD**



BS in Chemistry: Columbus State Uni-
versity
PharmD: Mercer University
Director of Clinical Services—John B.
Amos Cancer Center

**Angie Norrell,
PharmD**

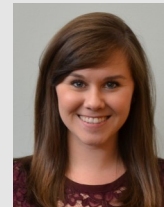


BS in Microbiology: Tennessee
Technological University
PharmD: Mercer University
PGY1: CRH—The Medical Center
Pharmacy Manager—John B. Amos
Cancer Center

**Deanne Tabb,
PharmD, MT (ASCP)**



BS in Medical Technology: Columbus State
University
PharmD: Auburn University
PGY1: CRH—The Medical Center
PGY2: Infectious Diseases: Mayo Clinic
Clinical Pharmacist: Infectious
Diseases



**Jordan Baxley,
PharmD**

PharmD: Samford University
PGY1: CRH—The Medical Center
Clinical Pharmacist: Internal Medicine

**Jennifer Hayes,
PharmD, BCPS**



PharmD: University of Georgia
PGY1: University of Washington
Medical Center/Harborview
Medical Center
Clinical Pharmacist: Ambulatory Care

**Laura Hagan,
PharmD, BCPS, BCPPS**



PharmD: Auburn University
PGY1: CRH—The Medical Center
Clinical Pharmacist: Pediatrics/
Neonatology

**Tushar Patel,
PharmD**



PharmD: South Carolina University
PGY1: CRH—The Medical Center
Clinical Pharmacist: Internal Medicine/
Oncology

**Matt McAllister,
PharmD, BCCCP**



PharmD: Drake University
PGY1: CRH—The Medical Center
PGY2: Emergency Medicine: University of
Florida Health
Clinical Pharmacist: Emergency Medicine

**Emily Brinkman,
PharmD, BCACP**



PharmD: University of Georgia
PGY1: CRH—The Medical Center
Clinical Pharmacist: Ambulatory Care

**Corinne Murphy,
PharmD, BCPS, BCCCP**



BS in Biology: North Georgia College and
State University
PharmD: Mercer University
PGY1: CRH—The Medical Center
Clinical Pharmacist: Internal Medicine

**Katie Fulks,
PharmD**



PharmD: Mercer University
PGY1: CRH—The Medical Center
Clinical Pharmacist: Internal Medicine

**Kelly Carter,
PharmD, BCPS**



PharmD: University of Georgia
PGY1: CRH—The Medical Center
Clinical Pharmacist: Internal Medicine

**Lauren Duty,
PharmD**



PharmD: University of Georgia
PGY1: CRH—The Medical Center
Clinical Pharmacist: Internal Medicine