

## Conference Purpose

This program is designed to provide contemporary educational information and case studies on a variety of cardiopulmonary and critical care topics. Conference faculty will facilitate critical thinking and enhance decision-making skills for the healthcare professional audience.

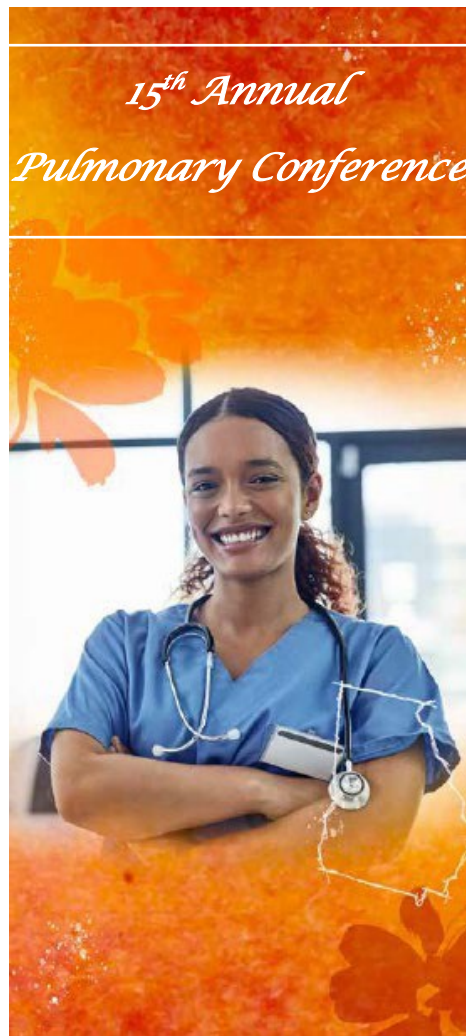
## Accreditation

In support of improving patient care, Piedmont Healthcare is jointly accredited by the Accreditation Council for Continuing Medical Education (ACCME), the Accreditation Council for Pharmacy Education (ACPE), and the American Nurses Credentialing Center (ANCC), to provide continuing education for the healthcare team.

Piedmont Healthcare designates this live activity for a maximum of *6.0 AMA PRA Category 1 Credit™*. Physicians should claim only the credit commensurate with the extent of their participation in the activity.

This activity was planned by and for the healthcare team and learners will receive 6.0 Interprofessional Continuing Education (IPCE) credits for learning and change.

This activity has been submitted for 6.0 Continuing Respiratory Care Education (CRCE) hours, accredited through the American Association for Respiratory Care (AARC) for Respiratory Care Professionals.



## *15<sup>th</sup> Annual Pulmonary Conference*

### *Pulmonary Topics of Interest 2024*

*Friday, May 17<sup>th</sup>, 2024*

*7am- 3:30pm*

*Shaheen Auditorium  
Building 1, First Level*



**Piedmont Atlanta Hospital**  
**1968 Peachtree Rd. NW.**  
**Atlanta, Ga. 30309**

## Fees

### **Piedmont Healthcare Employees:**

Before April 15 - \$40

After April 15- \$45

**Students:** (valid student ID must be presented day of the conference)

Before April 15 - \$30

After April 15 - \$35

### **Non-Piedmont Employees:**

Before April 15 - \$75

After April 15 - \$85

For additional information, visit our website, or contact

Dareja Finney at

[dareja.finney@piedmont.org](mailto:dareja.finney@piedmont.org)

or Victoria Liu at

[victoria.liu@piedmont.org](mailto:victoria.liu@piedmont.org).

## Driving Directions

### **From the North on I-75:**

Take I-75 South to Howell Mill Road/Northside Drive, exit 252. Exit at Howell Mill Road. Turn left onto Howell Mill Road. Turn right at the second traffic light onto Collier Road, then left onto Peachtree Rd. The hospital is on your left.

### **From the North on I-85:**

Take I-85 South to Highway 13 South/Peachtree Street, exit 86. Travel approximately 2.5 miles. Exit onto U.S. 19 North/ Peachtree St./Buckhead. Turn right, the hospital is on your left after approximately 1 mile.

**From the South on I-75/85:** Take I-75/85 North through downtown Atlanta. Stay on I-75 North to the first exit, Northside Drive, exit 252A. Turn right onto Northside Drive. Turn right at the first light onto Collier Road, then left onto Peachtree Rd. The hospital is on your left.

## Parking

\*PAH Employees are to park in regularly assigned lots\*. Other attendees, please utilize complimentary valet parking at the entrance of the Marcus Tower, accessible from the Peachtree Road entrance to Piedmont Atlanta Hospital.

## Registration Information

Early registration deadline is April 15, 2024. Registrations postmarked after April 15 are subject to the higher fee. No confirmation letters will be sent by mail. All fees must be paid in full on or before May 17<sup>th</sup>, 2024.

Registration and payment are through our conference website at [www.piedmont.org/pulmonaryconference](http://www.piedmont.org/pulmonaryconference) Cash and checks are accepted on the day of conference. Please make checks payable to: **Piedmont Atlanta Hospital**.

## Cancellation Policy

In order to receive a refund of your registration fee, written notification of your request must be received by April 15, 2024. No refunds will be made after April 15, 2024.

## Agenda

**7:00- 7:30am** Registration & Breakfast

**7:30- 8:30am** “Bronchoscopy Innovations and Updates in Lung Cancer”  
Dr. Raliza Martin

**8:30- 9:30am** “The Role of Screening for Obstructive Sleep Apnea in the Hospitalized Patient”  
Dr. Matthew Schmitt

**9:30- 10:00am** Break

**10:00- 11:00am** “Pulmonary Hypertension and Respiratory Therapy: And What is With the Nitric Oxide?”  
Dr. Chad Miller

**11:00- Noon** “Treatments and Advances in Neonatal Respiratory Distress Syndrome”  
Dr. Danielle Giliberti

**Noon- 1:00pm** Lunch

**1:00- 2:00pm** “The Difficult Airway”  
Dr. Ryan Carrick

**2:00- 2:15pm** Break

**2:15- 3:15pm** “What Is Pulmonary Rehabilitation?”  
Tracy Salas, RRT, RPFT, PDE-C

**3:15- 3:30pm** Evaluation

## Conference Faculty

Ralitza Martin, M.D., M.Sc.  
Piedmont Pulmonary Physicians  
Interventional Pulmonologist,  
Piedmont Healthcare

Matthew Schmitt, M.D.  
Chief of Sleep Medicine, Center of Excellence.  
Pulmonary Critical Care and Sleep Medicine, Piedmont Healthcare

Chad Miller, M.D.  
Critical Care Medicine and Pulmonology  
Piedmont Atlanta Hospital

Danielle Giliberti, M.D.  
Attending Neonatologist  
Piedmont Atlanta Hospital  
Atlanta Southside Practice,  
Pediatrix Medical Group of Georgia

Ryan Carrick, M.D.  
Critical Care Medicine and Pulmonology  
Medical Director, Respiratory Care Services, Piedmont Atlanta Hospital

Tracy Salas, RRT, RPFT, PDE-C.  
Pulmonary Rehabilitation Specialist  
Piedmont Atlanta Hospital